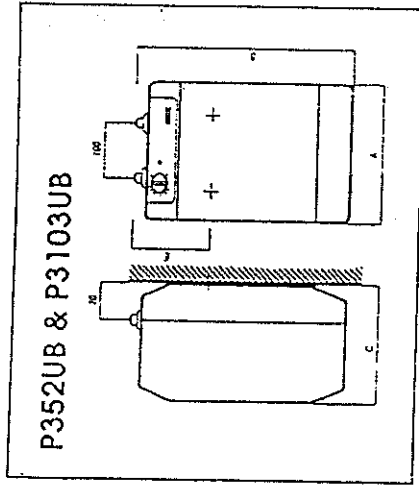
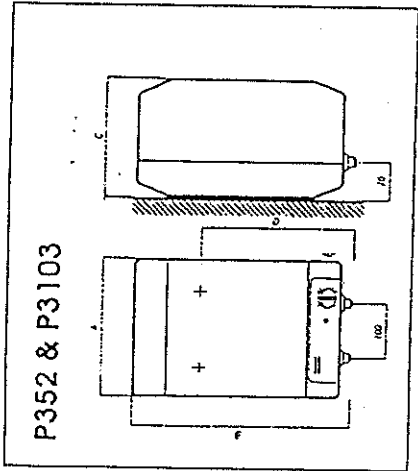


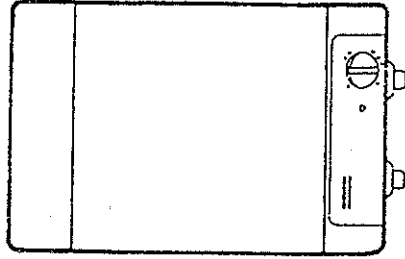
# ELECTRIC WATER HEATERS

## ZIP Tudor

### POINT OF USE WATER HEATERS



MODEL	P352	P352UB	P3103	P3103UB
Capacity	5 litres	5 litres	10 litres	10 litres
Nominal electrical loading	240v/2kW	240v/2kW	240v/3kW	240v/3kW
Heat loss kW/24hrs.	0.28kW	0.33kW	0.35kW	0.37kW
Weight - empty	3.5 kg	3.5 kg	4.0 kg	4.0 kg
Weight - full	8.5 kg	8.5 kg	14.0 kg	14.0 kg
Recovery time mins/+50°C	9 mins	9 mins	12 mins	12 mins
Dimensions A (mm)	255	255	310	310
B (mm)	390	390	455	455
C (mm)	215	215	265	265
D (mm)	265	-	355	-
E (mm)	-	140	-	180
Water connections	15mm	15mm	15mm	15mm
Installation	OVERBASIN	UNDERBASIN	OVERBASIN	UNDERBASIN
IMPORTANT	Overbasin models are supplied with a 300mm open outlet spout and water control valve. Underbasin models MUST be installed with a ZIP approved vented tap system. Products designed for installation over or under basin ARE NOT interchangeable.			



## FITTING & USER INSTRUCTIONS

(To be left with user after installation)

**ZIP HEATERS (UK) LTD**

Bertie Ward Way, Dereham, Norfolk NR19 1TE

Tel: 0870 6088888 Fax: 01362 692448

These Fitting & User Instructions refer to the following models:

MODEL	CAPACITY	LOADING	INSTALLATION
P352	5 litre	2kW	OVERBASIN
P352UB	5 litre	2kW	UNDERBASIN
P3103	10 litre	3kW	OVERBASIN
P3103UB	10 litre	3kW	UNDERBASIN

### IMPORTANT

Overbasin and underbasin models are not interchangeable. For underbasin applications use models designated 'UB' and USE with Zip approved vented tap accessories.

The Zip Tudor is a SINGLE point-of-use open outlet water heater. Being a displacement type water heater the hot water flow is controlled by the rate at which cold water enters the vessel.

It can be connected either to the cold water main or fed from an overhead cold water cistern (minimum head 3 metres). Being fully automatic the Tudor may be left switched on under control of the thermostat.

The stored hot water is delivered from an open outlet spout (supplied with overbasin models) or a Zip approved open outlet vented tap. This type of fitting is permanently open to atmosphere which allows the expansion of water, that occurs during the heating cycle, to be safely discharged.

During the heating cycle drips will form and fall from the delivery spout or tap and these will cease when the cycle has been completed and the stored water temperature has reached the level set by the user, the higher the temperature selected the greater the rate of expansion. Overtightening of the water control valve or tap will not prevent the drips that occur, but may cause damage to the valve or tap.

### Temperature Control

The operating temperature range is 35-80°C. To protect the water heater against frost the temperature control setting may be positioned at \* when a stored water temperature of 5°C will be maintained. NOTE - the protection does not extend to connecting pipework or fittings. The economy-setting 'E' will maintain the stored water temperature at approximately 60°C.

At the 'E' setting the temperature control locates into a set position and slight resistance will be felt when rotating the temperature control beyond this setting. This is a safety measure to ensure that higher temperatures are deliberately selected.

### Neon Lamp

The neon lamp will glow whilst the heating elements are in operation and will extinguish when the chosen temperature has been reached. CAUTION - the unit will remain 'live' when the neon does not glow. DO NOT remove the cover under any circumstances without first isolating the electrical supply to the water heater.

### Safety Cut-out

The Tudor features a manually resettable safety cut-out. In the event of a malfunction that leads to an overtemperature situation the cut-out will automatically cut off the electrical supply to the element. This can be manually reset when the fault has been corrected by a qualified electrician.

### Installation

It is recommended that the installation is carried out by a qualified electrician and plumber AFTER INSTALLATION THESE INSTRUCTIONS ARE TO BE RETAINED BY THE USER FOR FUTURE REFERENCE.

### IMPORTANT NOTE TO THE INSTALLER:

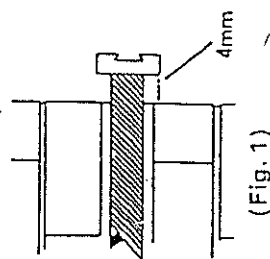
Ensure that these instructions are read and understood prior to installation. This water heater can be either connected to the cold water main or fed from a cold water cistern (minimum head 3 metres). It is fully automatic and may be left switched on under the control of the thermostat.

The water flow is regulated by the control valve supplied; when opened the incoming cold water displaces the stored hot water contents.

N.B. THE HOT WATER SHOULD BE DELIVERED FROM AN OPEN OUTLET SPOUT (SUPPLIED WITH THE OVERBASIN MODELS) OR A ZIP APPROVED OPEN OUTLET TAP FITTING THAT REMAINS PERMANENTLY OPEN TO ALLOW FOR EXPANSION THAT OCCURS DURING THE HEATING CYCLE. UNDER NO CIRCUMSTANCES SHOULD THE SPOUT OR OUTLET BE CONNECTED TO A TAP WHICH IS CAPABLE OF BEING CLOSED.

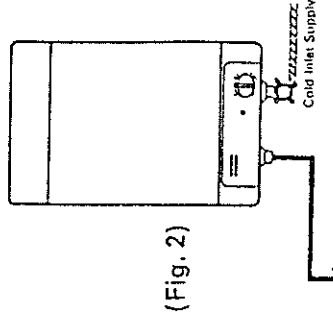
### 1. WALL MOUNTING (Fig. 1)

The unit is supported by screws fixed into the wall. These locate into keyhole slots (nominal centres 140mm apart) in the back casing. IT IS NOT NECESSARY TO REMOVE THE CASING TO MOUNT THE WATER HEATER ON THE WALL.



Before drilling the wall take care that the selected position avoids any pipework or electrical supply. Allow 4mm clearance between the screwhead and the wall for locating in the back casing.

Overbasin installations to be positioned to allow the open outlet spout to swing over the basin. A minimum clearance of 270mm is required on the underside to allow for the removal of the element plate assembly and servicing. If the installation is underbasin, allow the clearance of 270mm on the topside and sufficient clearance is left at the bottom to allow for the removal of the cover retaining screws. NB The water and electrical connections are at the top of the unit as shown in Fig. 4. Always ensure that the fixings and wall are strong enough to support the water heater when full.



### 2. PIPEWORK CONNECTIONS

#### A. OVERBASIN INSTALLATION (Fig. 2)

The inlet control valve supplied incorporates compression fittings suitable for fitting to 15mm copper pipe and the inlet connection (coloured blue) to the water heater. Fit the control valve to the cold water supply ensuring that the water flows in the direction of the arrow stamped on the valve. Do not over tighten the compression joints but ensure these are leak free. Fit the outlet spout supplied to the red coloured connection.

IT IS RECOMMENDED THAT AN ISOLATING VALVE IS FITTED TO THE COLD WATER SUPPLY TO THE WATER HEATER.

#### B. UNDERBASIN INSTALLATION

In all underbasin installations the outlet must be connected to an open outlet type fitting approved by Soletra.

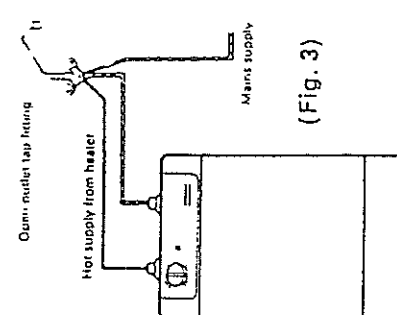


Fig. 3 Shows a typical installation of a MONODIOLC mixer

**4. OPERATION**  
DO NOT SWITCH ON THE HEATER UNTIL IT IS FILLED WITH WATER. It is full when water runs continuously from the spout or hot tap. Switch on the electrical supply and adjust the temperature control to the required level. The water will be heated accordingly. The neon will cease to glow when the set temperature has been reached.

NB. During the heating cycle, expansion will take place and water will drip from the spout (or vented tap in underbasin installations). Dripping will cease when the operating temperature has been reached, ensure that the spout is positioned over the basin during the heating cycle. Hot water is drawn off by opening the control valve fitted to the cold water inlet - coloured blue - connection in over basin installations, this allows cold water to enter the vessel displacing the stored hot water through the spout. In under basin installations the normal operation of the vented taps allow the displacement of stored hot water to take place.

**5. SERVICING**

It is recommended that servicing is carried out by a qualified electrician or plumber. BEFORE SERVICING SHUT OFF THE INCOMING WATER SUPPLY AND DISCONNECT THE MAINS ELECTRICAL SUPPLY. The overbasin model can be drained through the cold inlet connection whilst in the original position. An underbasin model has to be removed and drained through the hot outlet connection.

To remove outer case prise off the temperature control knob and release the screw located beneath. Remove the four securing screws at the top and bottom of the unit and lift off the outer case.

**6. SAFETY WARNING**

The water heater must not be used if suspected of being frozen. If water ceases to flow switch off the electricity supply immediately at the isolating switch. If the unit is to be serviced or drained, disconnect the electricity supply and the incoming water supply BEFORE commencing the operation.

**7. ACCESSORIES**

Only ZIP approved open outlet accessories should be used, the following are available:

**OVERBASIN**

OB/1 300mm Spout and Valve  
(supplied with overbasin models)  
TS/1 Telescopic Spout 350-500mm

**UNDERBASIN**

UB/1 Monobloc Mixer Tap  
UB/2 Two-Hole Kitchen Mixer  
UB/3 Kitchen Pillar Tap (Pair)  
UB/4 Basin Tap - Hot  
UB/5 Basin Tap - Cold

**8. SPARE PARTS**

A full range of spare parts are available for this unit. Please consult your stockist or ZIP for further information.

**9. GUARANTEE**

Goods are guaranteed for one year against faulty design, materials or workmanship having been properly installed and operated in accordance with these instructions. The Company has the option to replace or repair an entire product or component. The Company shall not be liable for any consequential loss or damage howsoever caused. It shall be the duty of the customer to insure against such consequential loss or damage.

The guarantee does not extend to the consequences of limescale deposits or frost damage over which the manufacturer has no control and for which the user is advised to take appropriate precautions. This guarantee does not affect the statutory rights of the consumer.

10. ZIP reserves the right to introduce modifications and improve product specifications without prior notice.